



Our #1 performance tee fabric is offered in a color-locking, moisture-wicking polo to expand your uniforming options.

- 3.8-ounce, 100% polyester interlock with PosiCharge technology
- Flat knit collar
- Removable tag for comfort and relabeling
- Taped neck
- 3-button placket with dyed-to-match buttons
- Set-in, open hem sleeves

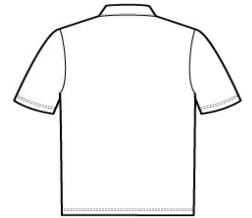
Due to the nature of 100% polyester performance fabrics, special care must be taken throughout the printing process.

CARE INSTRUCTIONS

Machine wash cold with like colors. Only non-chlorine bleach. When needed tumble dry low, remove promptly. Cool iron if needed. Do not use softener. Do not dry clean.



front



back

HOW TO MEASURE



CHEST
With arms down at sides, measure around the upper body, under arms and over the fullest part of the chest.

SIZE CHART

| | XS | S | M | L | XL | 2XL | 3XL | 4XL |
|-------|-------|-------|-------|-------|-------|-------|-------|-------|
| Chest | 32-34 | 35-37 | 38-40 | 41-43 | 44-46 | 47-49 | 50-53 | 54-57 |

COLOR INFORMATION

| | | | | | | | | | | |
|--------------------------|-----------------------------|----------------------------|--------------------------|------------------------|--------------------|---------------------|--------------------|-----------------------|----------------------|-------------------------|
| | | | | | | | | | | |
| Atomic Blue PMS 2203C | Black PMS NTR BLACK C | Carolina Blue PMS 7454C | Forest Green PMS 553C | Iron Grey PMS 7540C | Maroon PMS 504C | Purple PMS 7672C | Silver PMS 429C | True Navy PMS 533C | True Red PMS 200C | True Royal PMS 7686C |
| | | | | | | | | | | |
| White PMS WHITE | | | | | | | | | | |