



# Nike Long Sleeve Dri-FIT Stretch Tech Polo. 466364

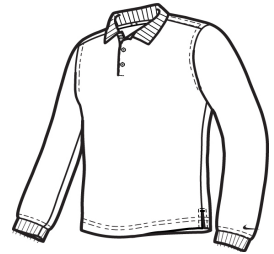


Long sleeves elevate this polo to another level of sophistication while Dri-FIT moisture management technology adds unparalleled performance. Stretch fabric for hassle-free swinging motion. Flat knit collar and cuffs. Heat transfer label for tag-free comfort. Three-button placket. Dyed-to-match buttons on White, Black and Midnight Navy. White buttons on Varsity Red, Anthracite and Blue Sapphire. The contrast Swoosh design trademark is embroidered on the lower left sleeve. Side vents. Made of 5-ounce, 100% polyester Dri-FIT fabric.

### CARE INSTRUCTIONS

Machine wash cold. wash inside out; wash with like colors. Do not use softeners. Do not use bleach. Tumble dry low. Do not iron. do not dry clean

[Tips For Effectively Screen Printing Polyester Fabrics](#)

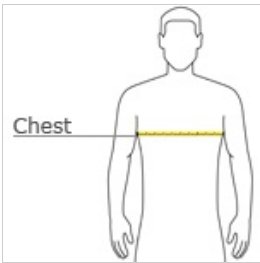


front



back

### HOW TO MEASURE



#### CHEST WIDTH

Measure under the arm and around the fullest part of the chest with arms down, keeping tape horizontal.

### SIZE CHART

	XS	S	M	L	XL	2XL	3XL	4XL
Chest Size (inches)	32-35	35 - 37 1/2	37 1/2 - 41	41 - 44	44 - 48 1/2	48 1/2 - 53 1/2	53 1/2 - 58	58 - 63

### COLOR INFORMATION

Anthracite PMS 432C	Black PMS PROCESS BLACK C	Blue Sapphire PMS 661C	Midnight Navy PMS 2767C	Varsity Red PMS 704C	White